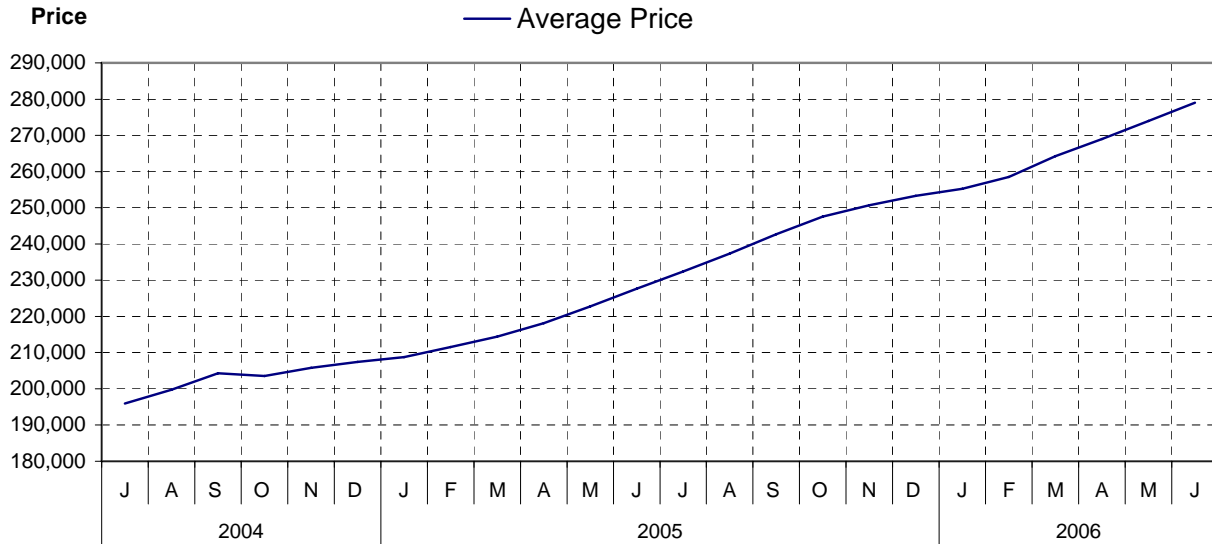


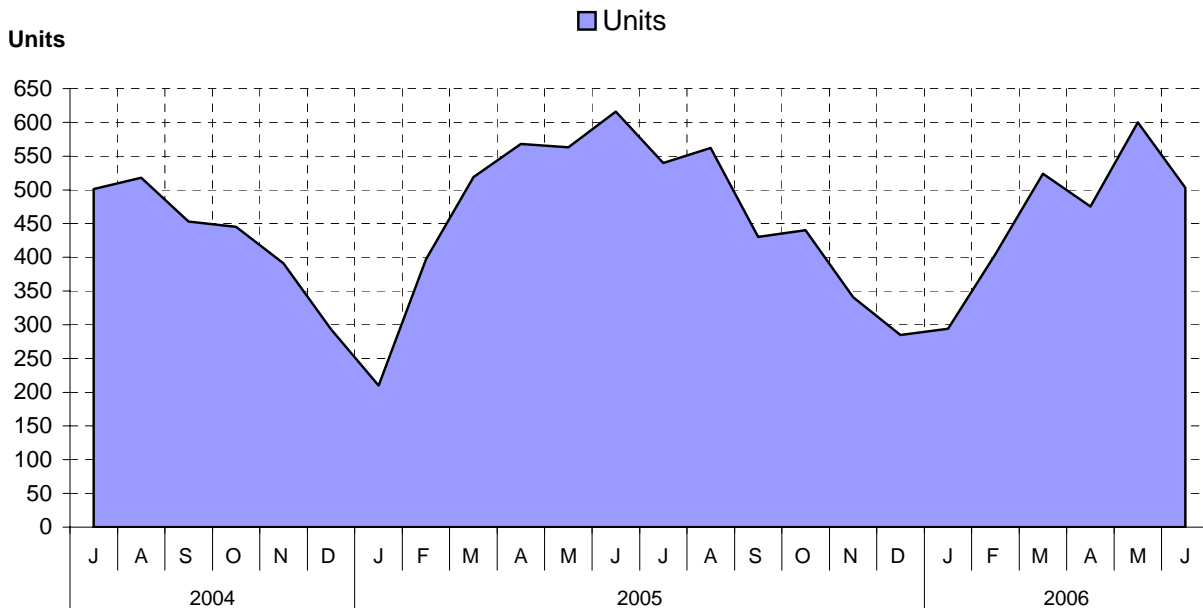
Board Area as at June 30, 2006

Cumulative Residential Average Single Family Sale Price



NOTE: Figures are based on a "rolling total" from the past 12 months – i.e. 12 months to date instead of the calendar "year to date".

Single Family Units Reported Sold



Comparative Activity by Property Type (Reported Sales – Unconditional Sales Only)

	-----CURRENT MONTH-----			-----12 MONTHS TO DATE-----		
	THIS YEAR	LAST YEAR	% Change	THIS YEAR	LAST YEAR	% Change
LOTS						
UNITS LISTED	181	143	26 %	1,621	1,427	13 %
UNITS REPORTED SOLD	78	105	25-%	921	859	7 %
SELL/LIST RATIO	43 %	73 %		56 %	60 %	
REPORTED SALES DOLLARS	9,669,945	13,270,206	27-%	111,815,862	83,200,570	34 %
AVG SELL PRICE/UNIT	123,973	126,382	1-%	121,407	96,857	25 %
PRICE RATIO	97 %	97 %		98 %	96 %	
DAYS TO SELL	58	73	20-%	75	101	25-%
ACTIVE LISTINGS	588	523	12 %			
SINGLE FAMILY						
UNITS LISTED	907	797	13 %	8,123	7,326	10 %
UNITS REPORTED SOLD	503	616	18-%	5,398	5,474	1-%
SELL/LIST RATIO	55 %	77 %		66 %	74 %	
REPORTED SALES DOLLARS	155,265,122	159,353,351	2-%	1,506,052,235	1,246,233,753	20 %
AVG SELL PRICE/UNIT	308,678	258,690	19 %	279,001	227,664	22 %
PRICE RATIO	98 %	98 %		98 %	98 %	
DAYS TO SELL	43	46	6-%	49	50	2-%
ACTIVE LISTINGS	2,029	1,580	28 %			
CONDOMINIUM (APT)						
UNITS LISTED	187	86	117 %	1,482	1,386	6 %
UNITS REPORTED SOLD	104	127	18-%	1,096	970	12 %
SELL/LIST RATIO	55 %	147 %		73 %	69 %	
REPORTED SALES DOLLARS	27,139,918	18,316,132	48 %	177,183,328	129,306,256	37 %
AVG SELL PRICE/UNIT	260,960	144,221	80 %	161,663	133,305	21 %
PRICE RATIO	99 %	99 %		98 %	98 %	
DAYS TO SELL	46	67	31-%	56	61	8-%
ACTIVE LISTINGS	484	414	16 %			
CONDOMINIUM (TWNHSE)						
UNITS LISTED	124	55	125 %	938	739	26 %
UNITS REPORTED SOLD	63	58	8 %	614	576	6 %
SELL/LIST RATIO	50 %	105 %		65 %	77 %	
REPORTED SALES DOLLARS	13,480,270	9,412,009	43 %	114,373,114	89,594,946	27 %
AVG SELL PRICE/UNIT	213,972	162,276	31 %	186,275	155,546	19 %
PRICE RATIO	98 %	98 %		98 %	98 %	
DAYS TO SELL	46	49	6-%	48	58	17-%
ACTIVE LISTINGS	269	160	68 %			

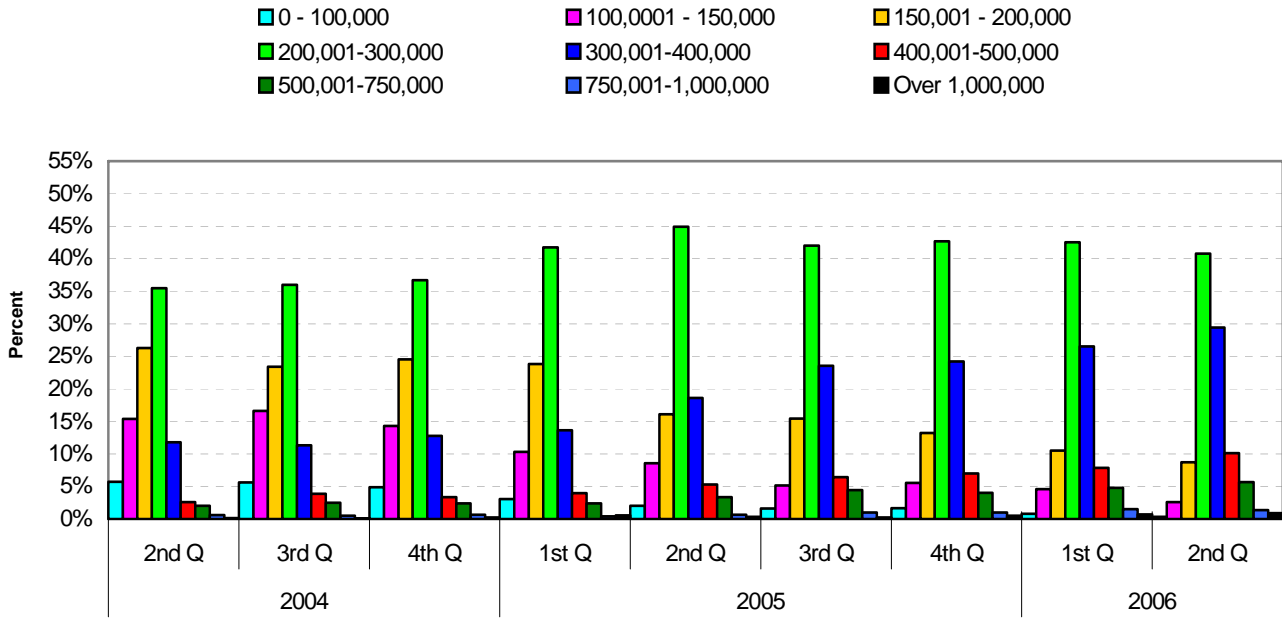
PLEASE NOTE:

SINGLE FAMILY property does NOT INCLUDE acreage with house, condominiums, duplex/triplex, mobile homes, single family waterfront or single family strata.

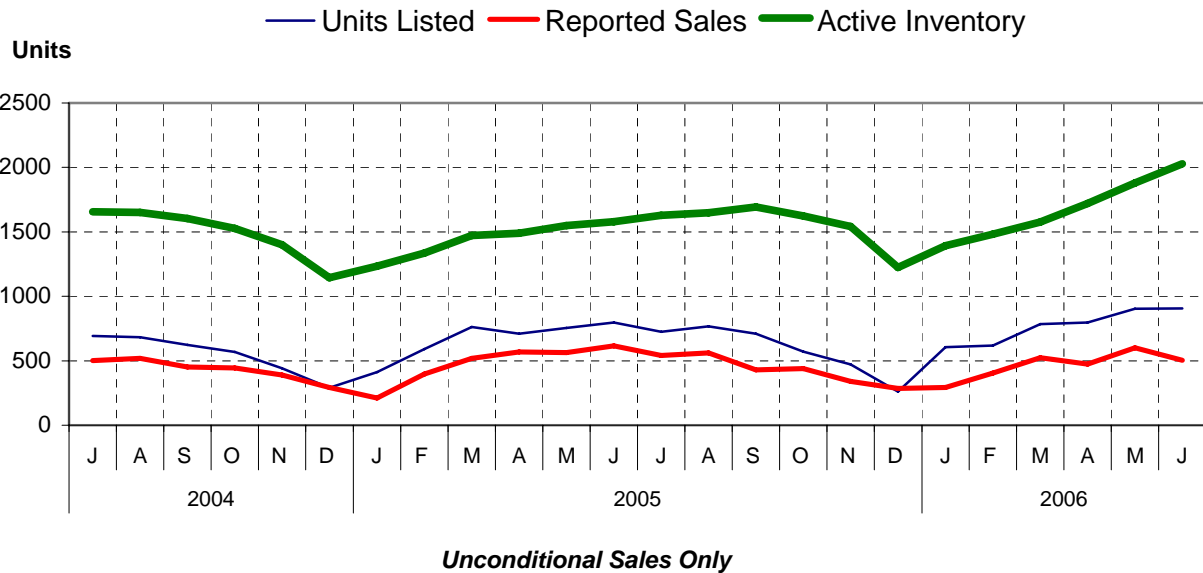
LOTS do NOT INCLUDE acreage or waterfront acreage.

COLLAPSE RATE – The collapse rate for all properties within the Board area was 0.9% for the current month.

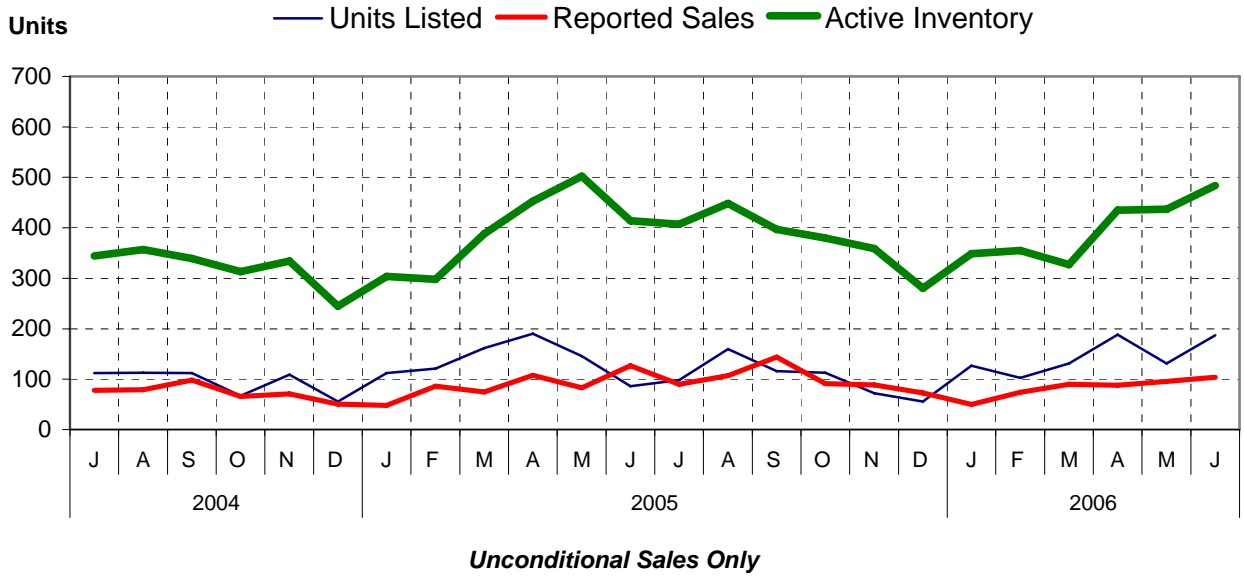
Percentage of Market Share by Price Range Board Area



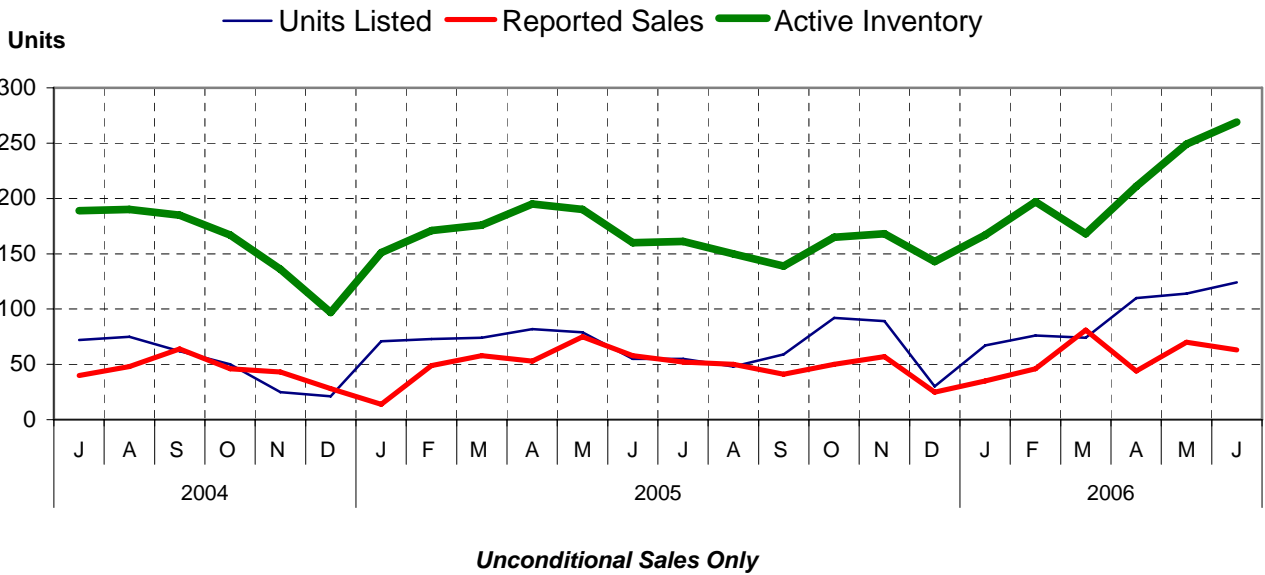
Single Family Comparisons between



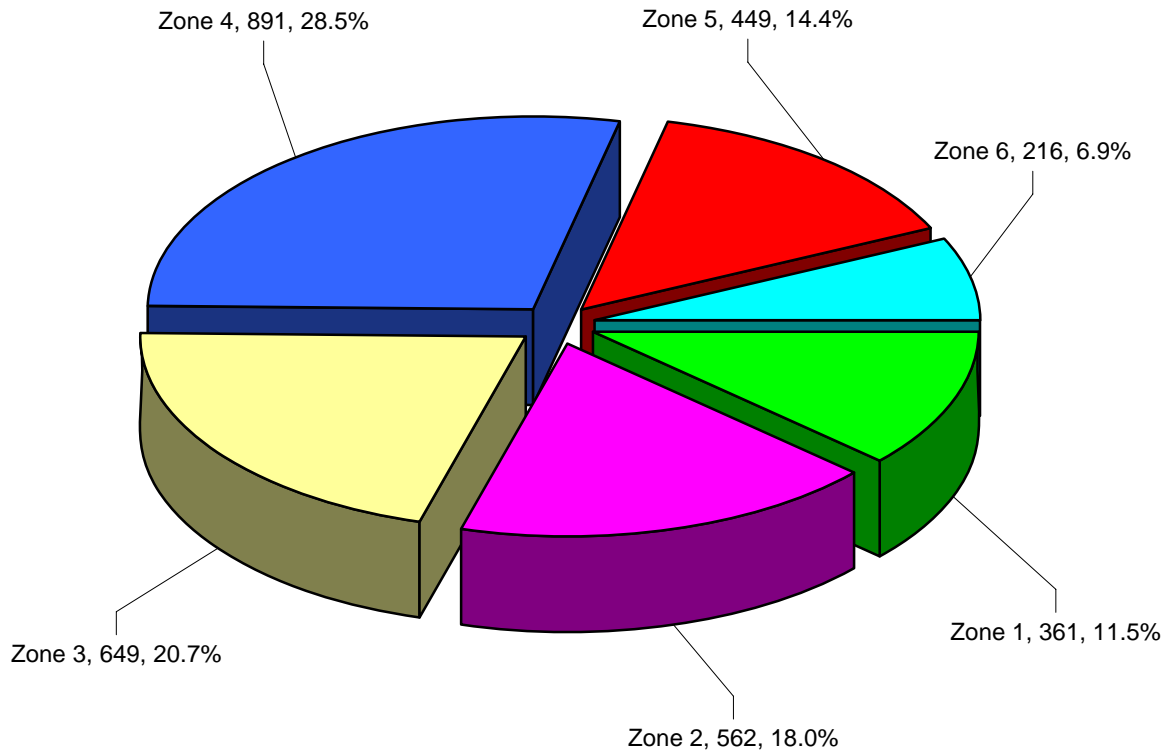
Condominium (Apartment) Comparisons between



Condominium (Townhouse) Comparisons between



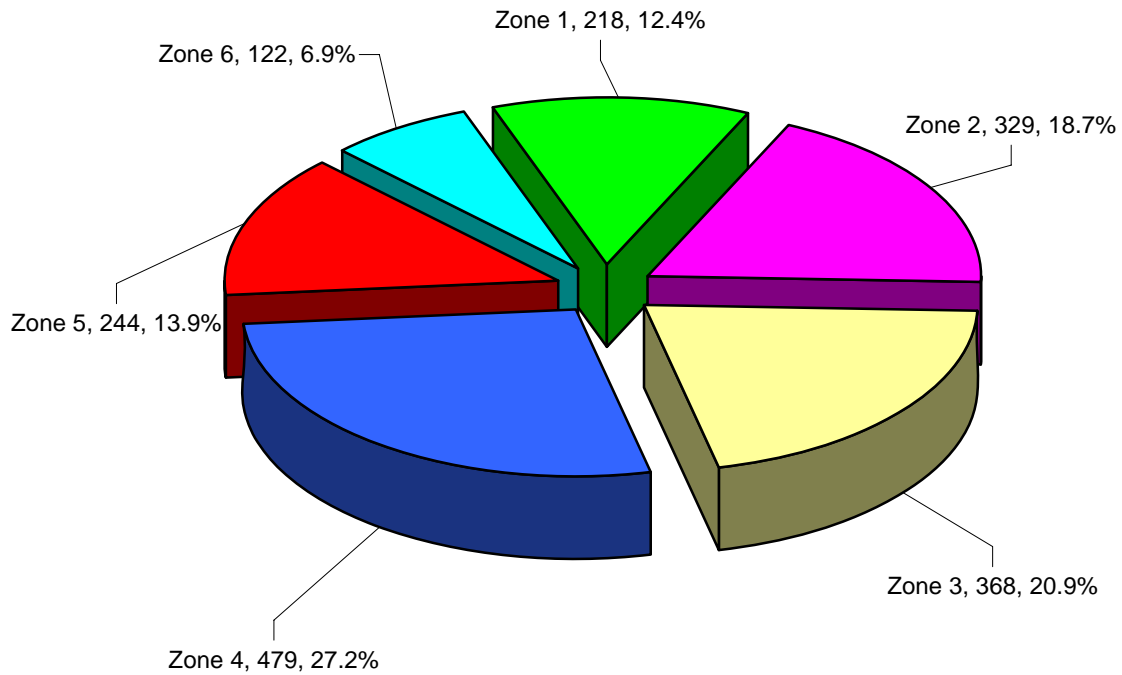
MLS® Single Family Sales Analysis For Board Area – by Zone



Total Unconditional Sales January 1 to June 30, 2006 = 3,128

Zone 1 – Campbell River
Zone 2 – Comox Valley
Zone 3 – Cowichan Valley
Zone 4 – Nanaimo
Zone 5 – Parksville/Qualicum
Zone 6 – Port Alberni/West Coast

2nd Quarter 2006 MLS® Single Family Sales Analysis For Board Area – By Zone



Total Unconditional Sales - 1,760
2nd Quarter - April 1 to June 30, 2006

Zone 1 – Campbell River
Zone 2 – Comox Valley
Zone 3 – Cowichan Valley
Zone 4 – Nanaimo
Zone 5 – Parksville/Qualicum
Zone 6 – Port Alberni/West Coast