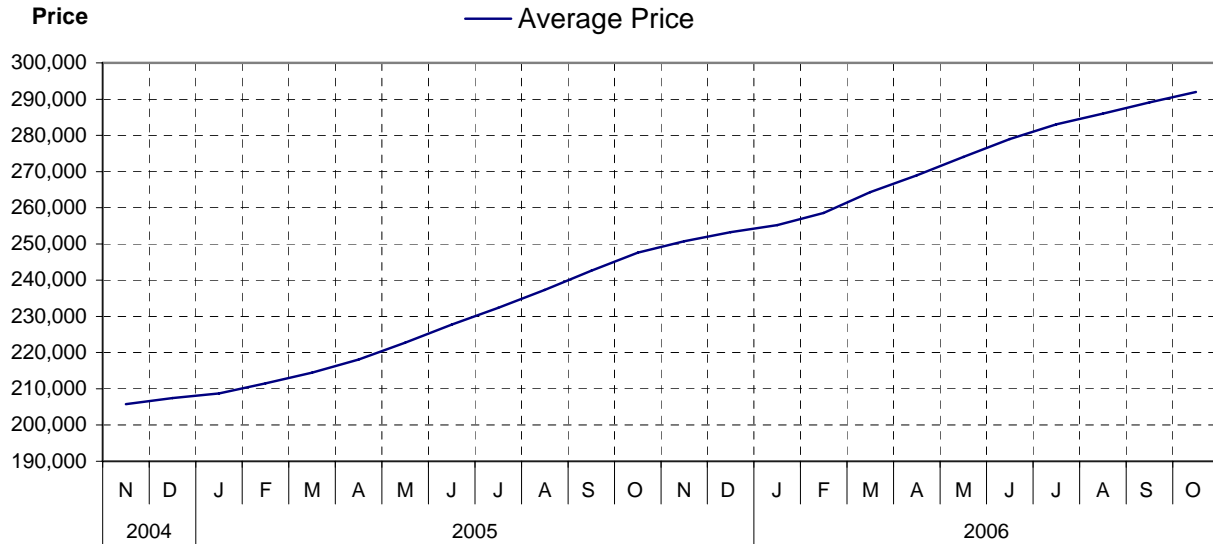


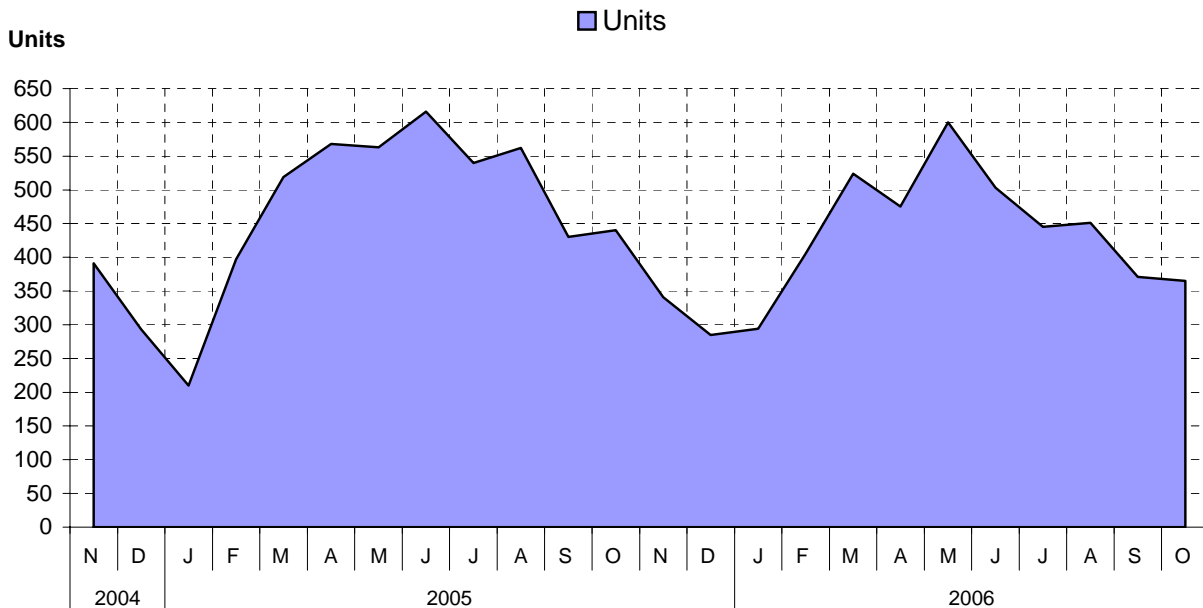
Board Area as at October 31, 2006

Cumulative Residential Average Single Family Sale Price



NOTE: Figures are based on a "rolling total" from the past 12 months – i.e. 12 months to date instead of the calendar "year to date".

Single Family Units Reported Sold



Comparative Activity by Property Type

(Reported Sales – Unconditional Sales Only)

	-----CURRENT MONTH-----			-----12 MONTHS TO DATE-----		
	THIS YEAR	LAST YEAR	% Change	THIS YEAR	LAST YEAR	% Change
LOTS						
UNITS LISTED	110	114	3-%	1,764	1,502	17 %
UNITS REPORTED SOLD	50	71	29-%	866	968	10-%
SELL/LIST RATIO	45 %	62 %		49 %	64 %	
REPORTED SALES DOLLARS	7,454,780	7,096,600	5 %	113,705,791	101,261,394	12 %
AVG SELL PRICE/UNIT	149,095	99,952	49 %	131,299	104,608	25 %
PRICE RATIO	94 %	97 %		98 %	96 %	
DAYS TO SELL	78	68	14 %	73	91	19-%
ACTIVE LISTINGS	689	511	34 %			

SINGLE FAMILY

UNITS LISTED	676	571	18 %	8,253	7,534	9 %
UNITS REPORTED SOLD	365	440	17-%	5,059	5,528	8-%
SELL/LIST RATIO	53 %	77 %		61 %	73 %	
REPORTED SALES DOLLARS	110,050,437	117,458,230	6-%	1,477,031,625	1,368,115,063	7 %
AVG SELL PRICE/UNIT	301,508	266,950	12 %	291,961	247,488	17 %
PRICE RATIO	97 %	98 %		98 %	98 %	
DAYS TO SELL	58	48	20 %	52	50	4 %
ACTIVE LISTINGS	2,111	1,623	30 %			

CONDOMINIUM (APT)

UNITS LISTED	177	113	56 %	1,567	1,469	6 %
UNITS REPORTED SOLD	66	91	27-%	981	1,081	9-%
SELL/LIST RATIO	37 %	80 %		62 %	73 %	
REPORTED SALES DOLLARS	13,159,650	13,901,111	5-%	178,204,661	148,656,683	19 %
AVG SELL PRICE/UNIT	199,388	152,759	30 %	181,656	137,517	32 %
PRICE RATIO	98 %	98 %		98 %	98 %	
DAYS TO SELL	83	61	36 %	61	55	10 %
ACTIVE LISTINGS	578	380	52 %			

CONDOMINIUM (TWNHSE)

UNITS LISTED	94	92	2 %	1,077	734	46 %
UNITS REPORTED SOLD	64	50	28 %	656	571	14 %
SELL/LIST RATIO	68 %	54 %		60 %	77 %	
REPORTED SALES DOLLARS	16,028,700	9,564,100	67 %	136,923,946	93,299,548	46 %
AVG SELL PRICE/UNIT	250,448	191,282	30 %	208,725	163,396	27 %
PRICE RATIO	98 %	98 %		98 %	98 %	
DAYS TO SELL	54	48	12 %	50	51	1-%
ACTIVE LISTINGS	304	165	84 %			

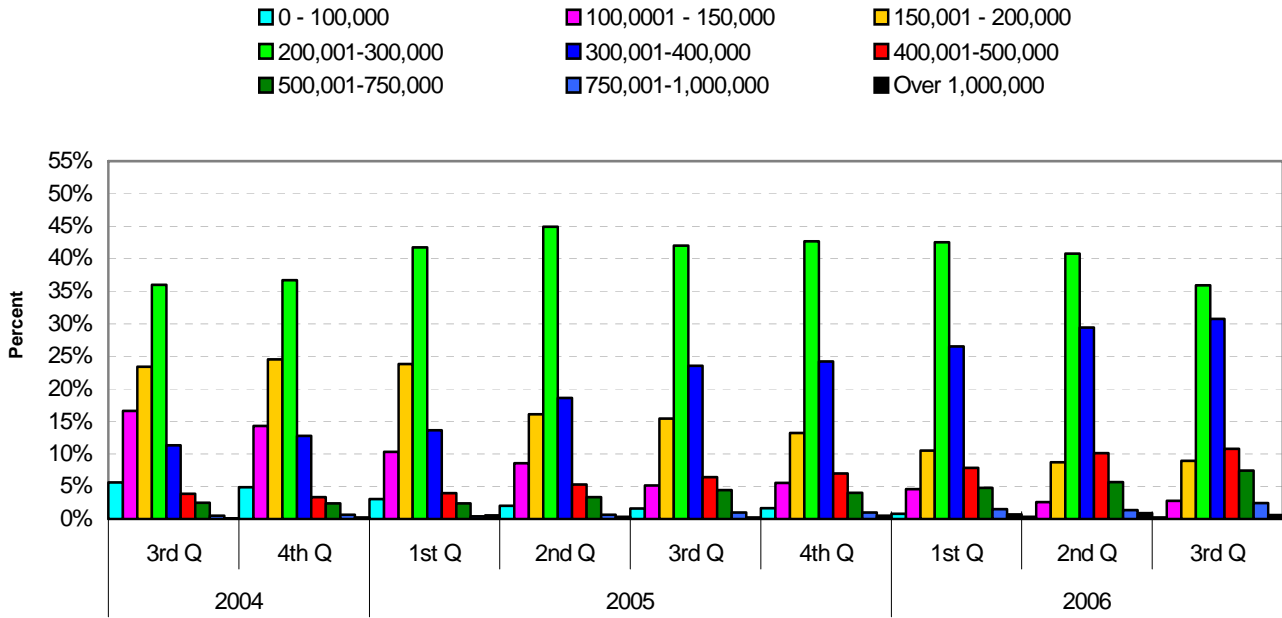
PLEASE NOTE:

SINGLE FAMILY property does NOT INCLUDE acreage with house, condominiums, duplex/triplex, mobile homes, single family waterfront or single family strata.

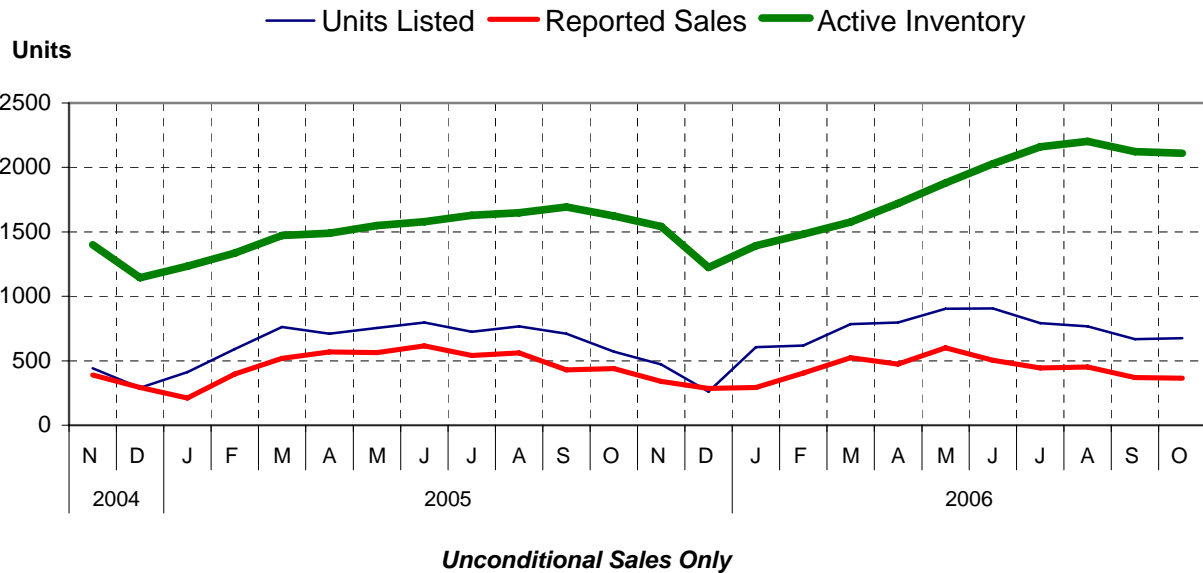
LOTS do NOT INCLUDE acreage or waterfront acreage.

COLLAPSE RATE – The collapse rate for all properties within the Board area was 1.1% for the current month.

Percentage of Market Share by Price Range Board Area

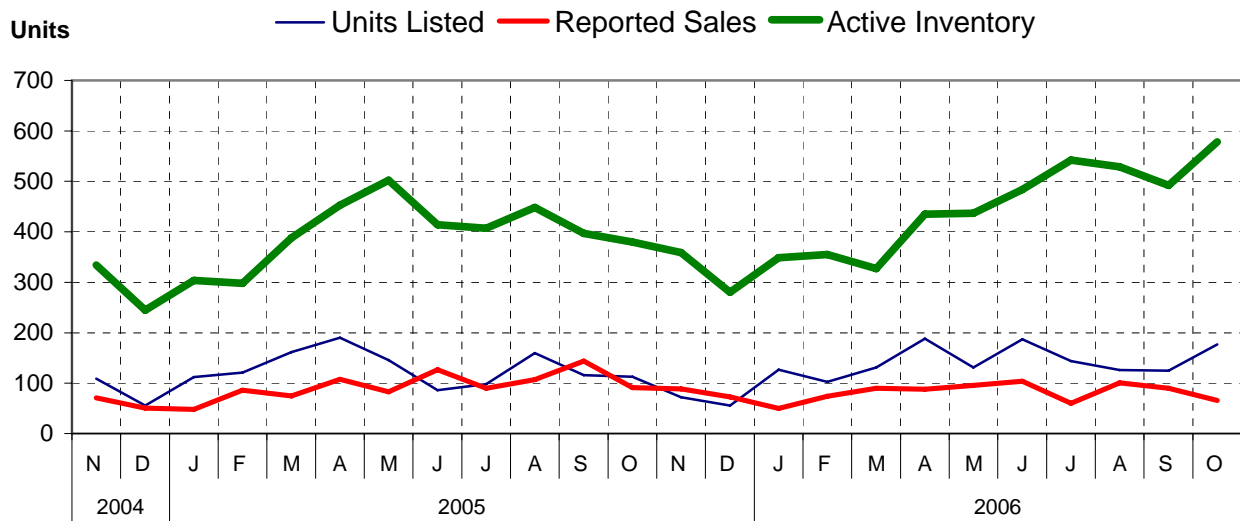


Single Family Comparisons between



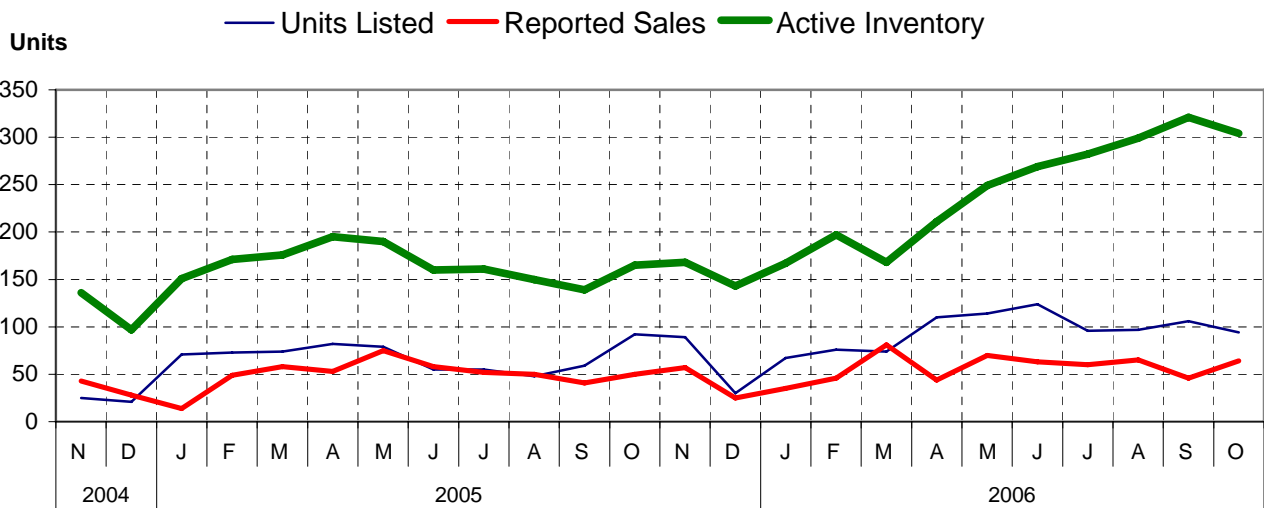
Unconditional Sales Only

Condominium (Apartment) Comparisons between



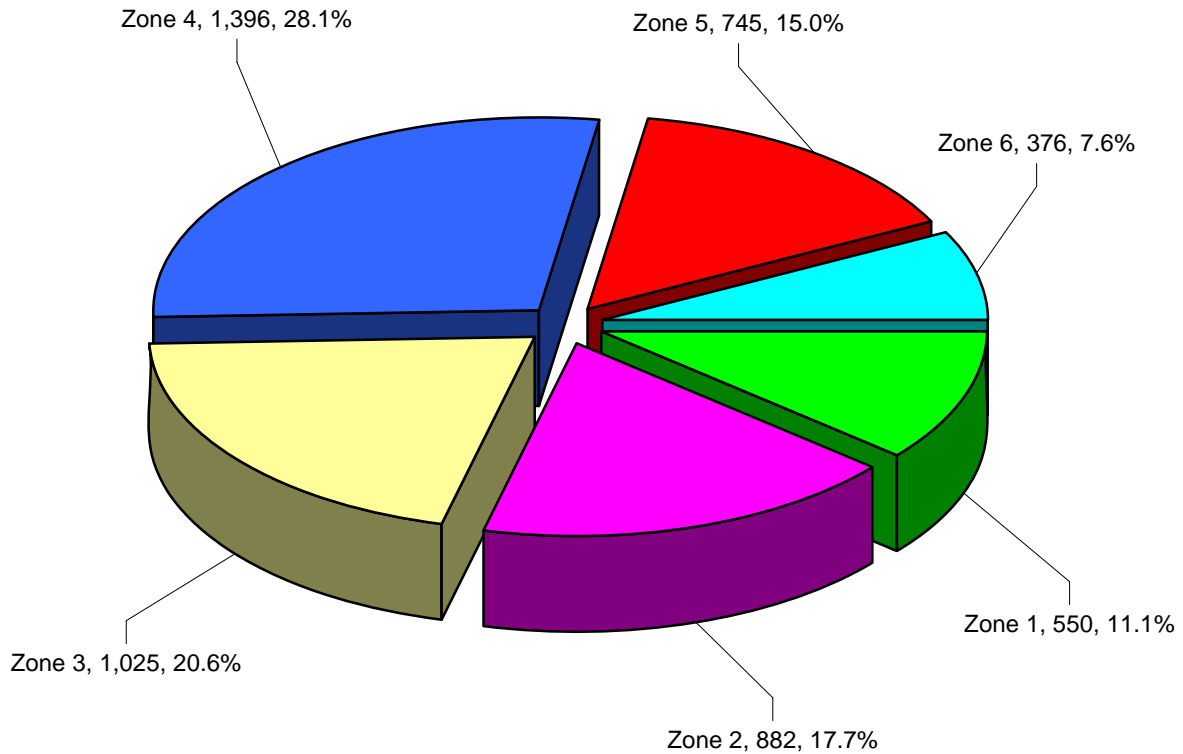
Unconditional Sales Only

Condominium (Townhouse) Comparisons between



Unconditional Sales Only

MLS® Single Family Sales Analysis For Board Area – by Zone



Total Unconditional Sales January 1 to October 31, 2006 = 4,974

Zone 1 – Campbell River
Zone 2 – Comox Valley
Zone 3 – Cowichan Valley
Zone 4 – Nanaimo
Zone 5 – Parksville/Qualicum
Zone 6 – Port Alberni/West Coast