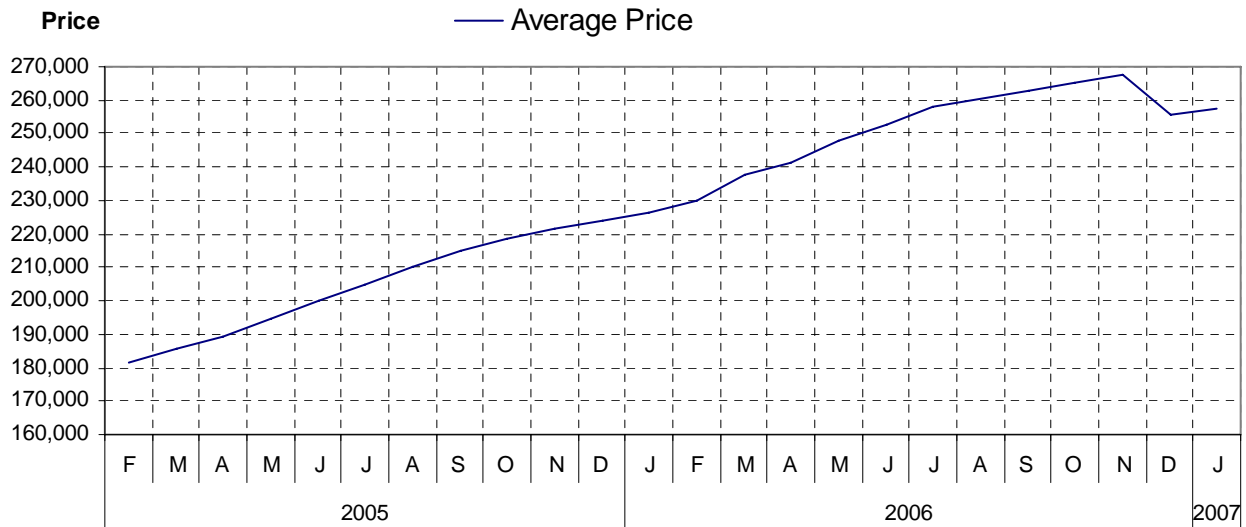


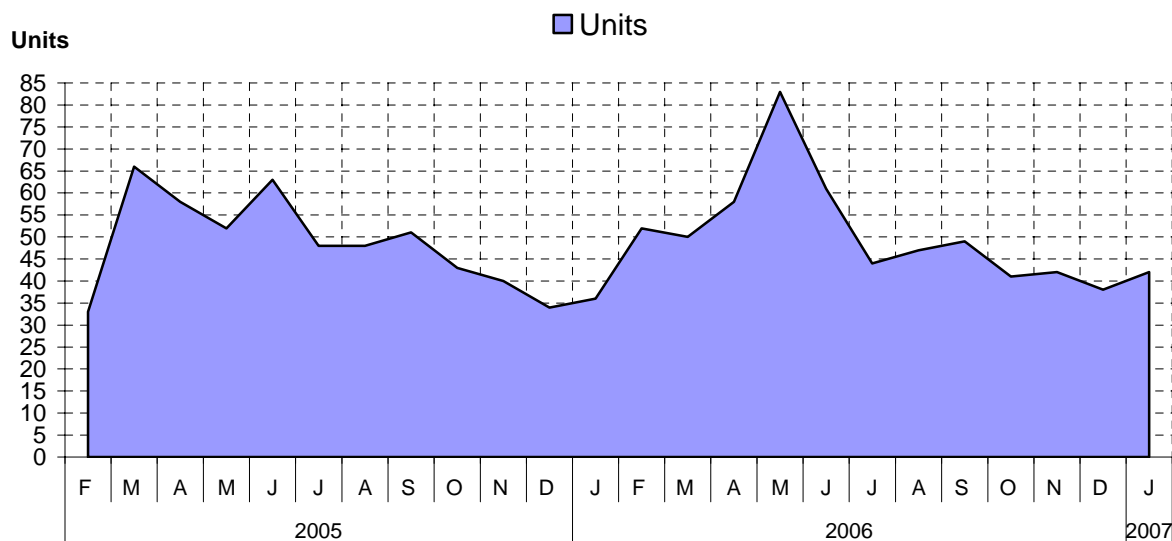
# Campbell River / North Island as at January 31, 2007

## Cumulative Residential Average Single Family Sales



NOTE: Figures are based on a "rolling total" from the past 12 months – i.e. 12 months to date instead of the calendar "year to date".

## Single Family Units Reported Sold



## Comparative Activity by Property Type

(Reported Sales – Unconditional Sales Only)

	-----CURRENT MONTH-----			-----12 MONTHS TO DATE-----		
	THIS YEAR	LAST YEAR	% Change	THIS YEAR	LAST YEAR	% Change
<b>LOTS</b>						
UNITS LISTED	31	2	1450 %	234	117	100 %
UNITS REPORTED SOLD	6	5	20 %	112	120	6-%
SELL/LIST RATIO	19 %	250 %		47 %	102 %	
REPORTED SALES DOLLARS	666,400	409,900	62 %	11,778,140	9,863,363	19 %
AVG SELL PRICE/UNIT	111,066	81,980	35 %	105,161	82,194	27 %
MEDIAN SELL PRICE	114,900			95,900		
PRICE RATIO	100 %	98 %		98 %	98 %	
DAYS TO SELL	44	129	65-%	84	155	45-%
ACTIVE LISTINGS	103	23	347 %			
<b>SINGLE FAMILY</b>						
UNITS LISTED	83	66	25 %	945	844	11 %
UNITS REPORTED SOLD	42	38	10 %	645	629	2 %
SELL/LIST RATIO	50 %	57 %		68 %	74 %	
REPORTED SALES DOLLARS	10,575,950	8,591,087	23 %	166,047,310	133,686,466	24 %
AVG SELL PRICE/UNIT	251,808	226,081	11 %	257,437	212,538	21 %
MEDIAN SELL PRICE	239,000			247,000		
PRICE RATIO	98 %	98 %		98 %	98 %	
DAYS TO SELL	83	61	36 %	57	45	26 %
ACTIVE LISTINGS	200	151	32 %			
<b>CONDOMINIUM (APT)</b>						
UNITS LISTED	18	42	57-%	152	206	26-%
UNITS REPORTED SOLD	8	7	14 %	145	163	11-%
SELL/LIST RATIO	44 %	16 %		95 %	79 %	
REPORTED SALES DOLLARS	1,195,700	1,079,500	10 %	26,384,027	23,616,626	11 %
AVG SELL PRICE/UNIT	149,462	154,214	3-%	181,958	144,887	25 %
MEDIAN SELL PRICE	125,050			150,000		
PRICE RATIO	99 %	98 %		98 %	99 %	
DAYS TO SELL	60	54	11 %	93	82	13 %
ACTIVE LISTINGS	40	70	42-%			
<b>CONDOMINIUM (TWNHSE)</b>						
UNITS LISTED	4	5	20-%	63	59	6 %
UNITS REPORTED SOLD	0	0		47	53	11-%
SELL/LIST RATIO	0 %	0 %		74 %	89 %	
REPORTED SALES DOLLARS	0	0		7,247,049	5,806,400	24 %
AVG SELL PRICE/UNIT	0			154,192	109,554	40 %
MEDIAN SELL PRICE	0			149,900		
PRICE RATIO				98 %	98 %	
DAYS TO SELL				40	58	31-%
ACTIVE LISTINGS	13	10	30 %			

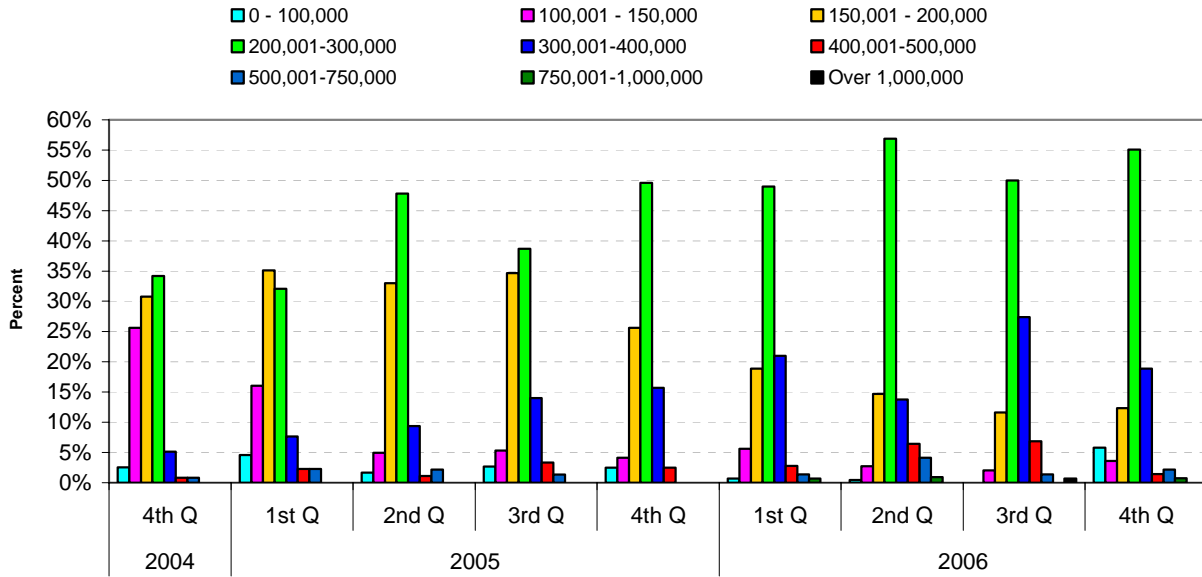
### PLEASE NOTE:

**SINGLE FAMILY** property does NOT INCLUDE acreage with house, condominiums, duplex/triplex, mobile homes, single family waterfront or single family strata.

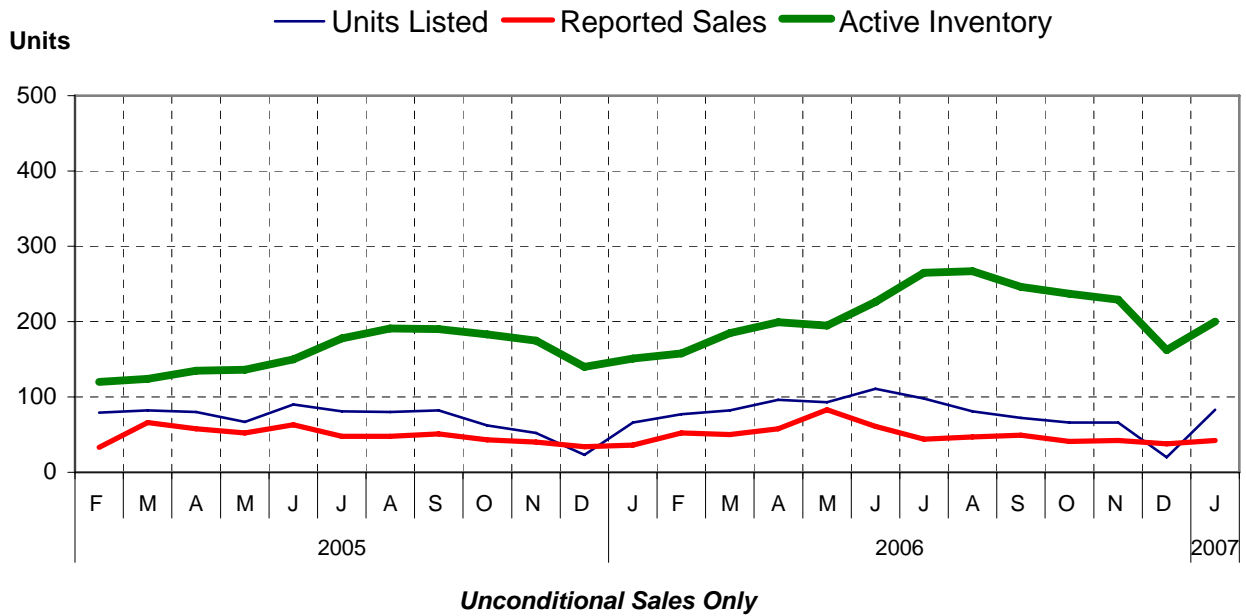
**LOTS** do NOT INCLUDE acreage or waterfront acreage.

**COLLAPSE RATE** – The collapse rate for all properties within the Board area was 0.3% for the current month.

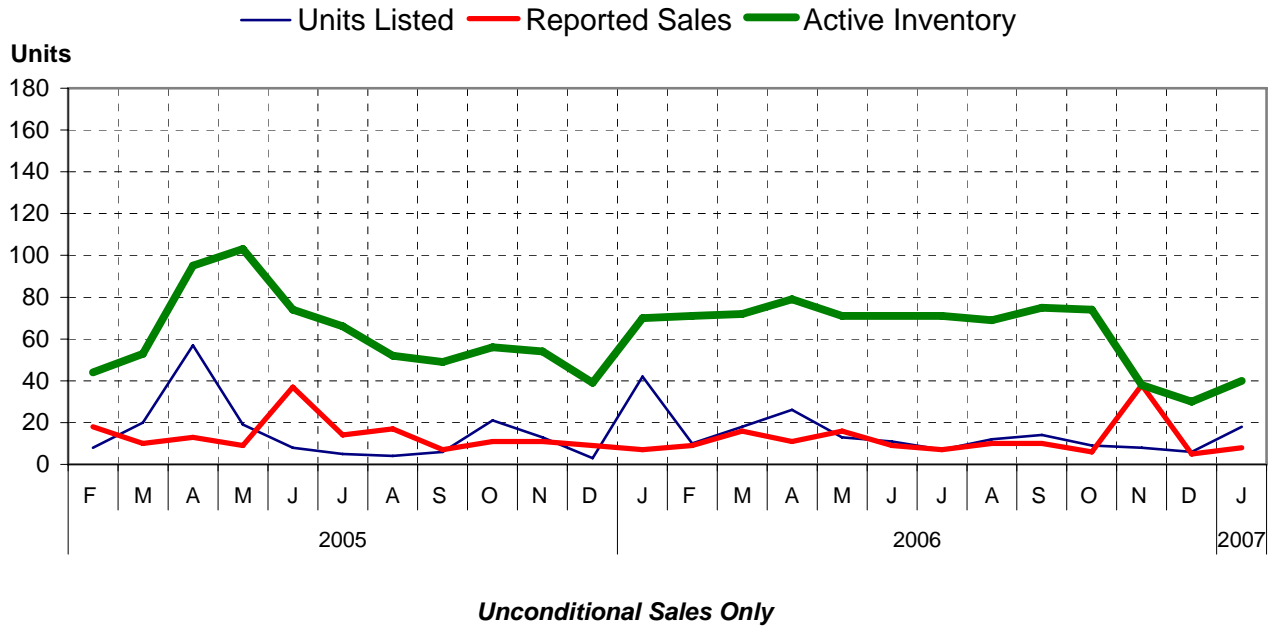
### Percentage of Market Share by Price Range Campbell River



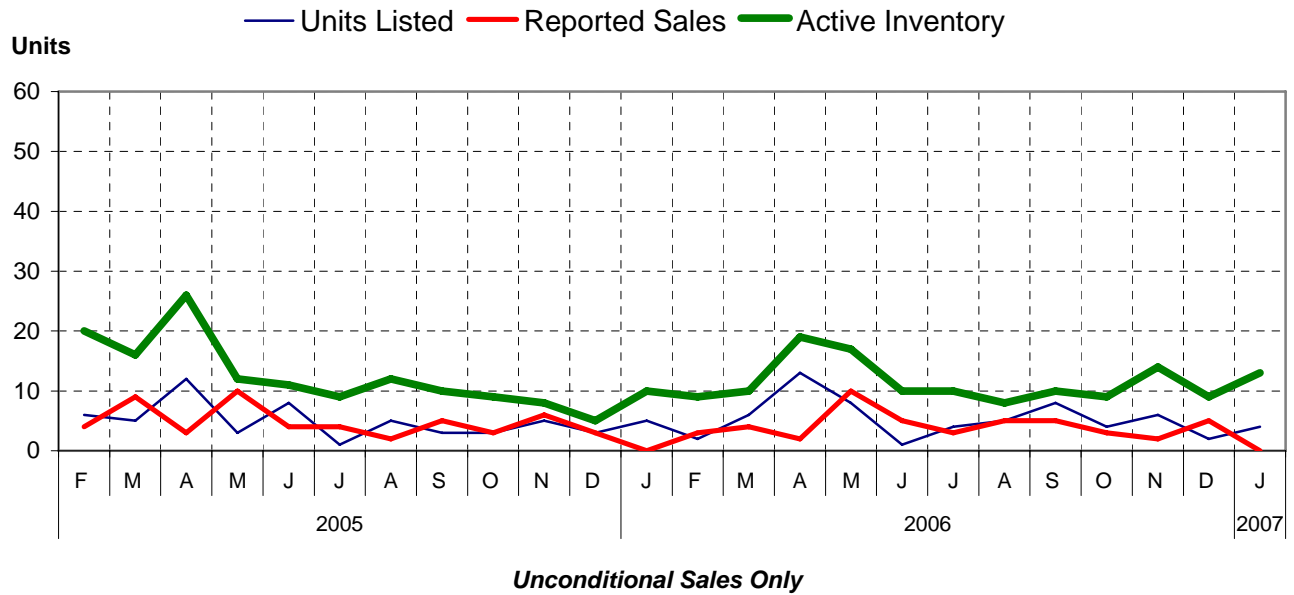
### Single Family Comparisons between



## Condominium (Apartment) Comparisons between



## Condominium (Townhouse) Comparisons between



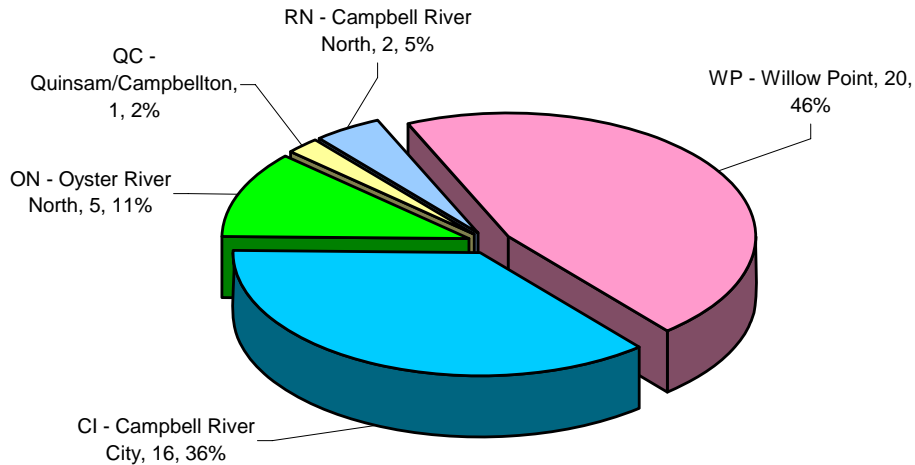
## MLS® Single Family Sales Analysis

Unconditional Sales from January 1 to January 31, 2007

-----SUB-AREAS-----

<b>RANGE</b>	<b>TOTAL</b>	<b>CI</b>	<b>ON</b>	<b>QC</b>	<b>RN</b>	<b>WP</b>
0 - 100,000	0					
100,001- 150,000	2	1	1			
150,001- 200,000	8	5	1	1	1	
200,001- 300,000	24	8	3			13
300,001- 400,000	8	2			1	5
400,001- 500,000	1					1
500,001- 750,000	1					1
750,001-1,000,000	0					
OVER 1,000,000	0					
<b>ZONE 1 TOTALS</b>	<b>44</b>	<b>16</b>	<b>5</b>	<b>1</b>	<b>2</b>	<b>20</b>

### Single Family Sales-Campbell River by Subarea



Total Unconditional Sales January 1 to January 31, 2007 = 44