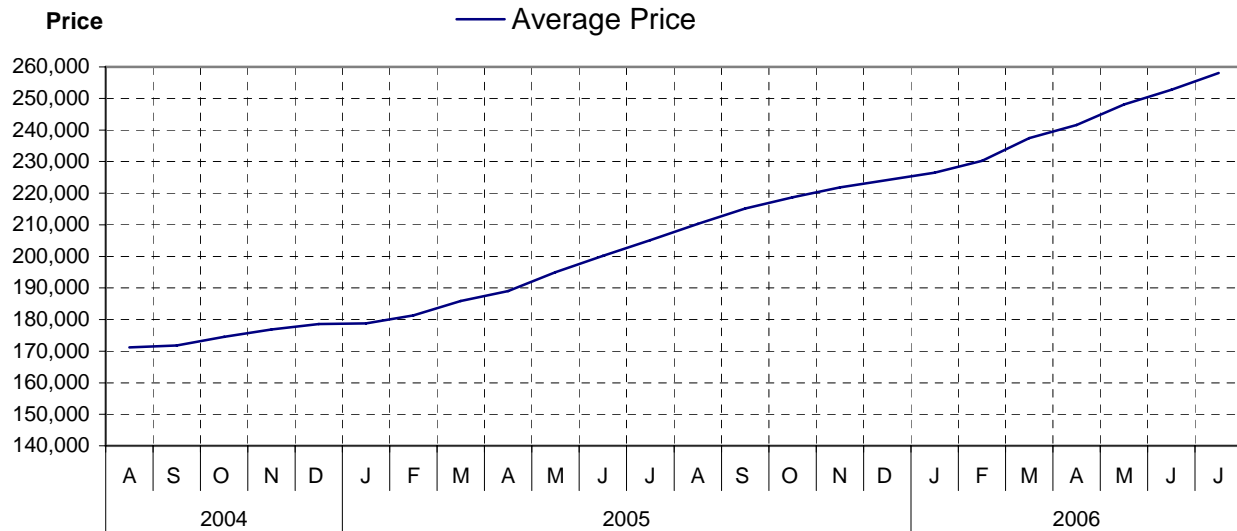


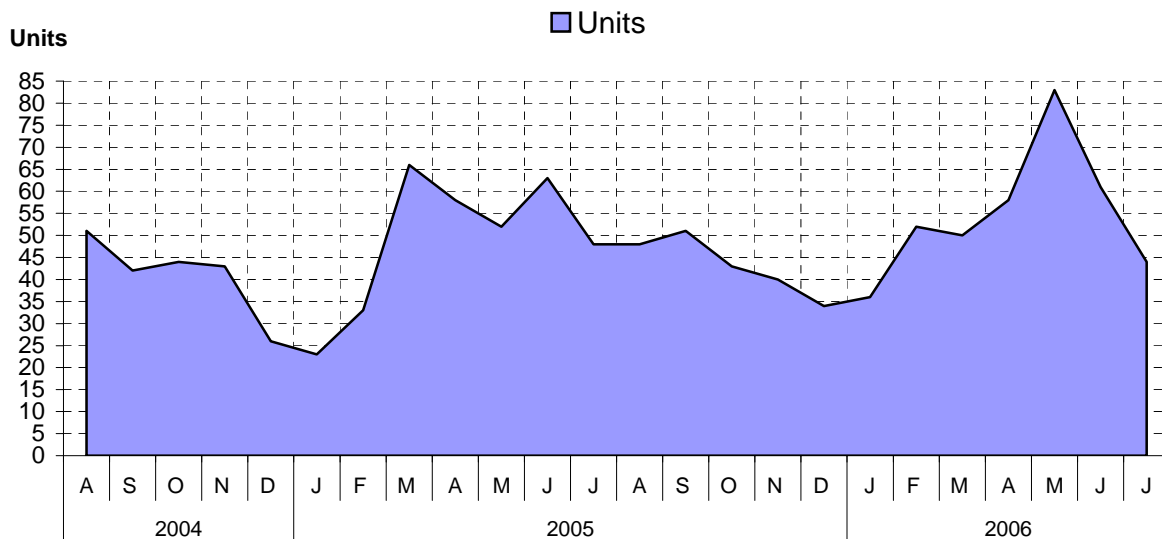
Campbell River / North Island as at July 31, 2006

Cumulative Residential Average Single Family Sales Price



NOTE: Figures are based on a "rolling total" from the past 12 months – i.e. 12 months to date instead of the calendar "year to date".

Single Family Units Reported Sold



Comparative Activity by Property Type

(Reported Sales – Unconditional Sales Only)

	-----CURRENT MONTH-----			-----12 MONTHS TO DATE-----		
	THIS YEAR	LAST YEAR	% Change	THIS YEAR	LAST YEAR	% Change
LOTS						
UNITS LISTED	7	17	58-%	156	187	16-%
UNITS REPORTED SOLD	7	10	30-%	96	160	40-%
SELL/LIST RATIO	100 %	58 %		61 %	85 %	
REPORTED SALES DOLLARS	710,700	965,800	26-%	9,658,200	12,203,763	20-%
AVG SELL PRICE/UNIT	101,528	96,580	5 %	100,606	76,273	31 %
MEDIAN SELL PRICE	92,500			92,000		
PRICE RATIO	97 %	98 %		98 %	98 %	
DAYS TO SELL	98	57	71 %	88	142	38-%
ACTIVE LISTINGS	79	49	61 %			
SINGLE FAMILY						
UNITS LISTED	98	81	20 %	922	748	23 %
UNITS REPORTED SOLD	44	48	8-%	600	549	9 %
SELL/LIST RATIO	44 %	59 %		65 %	73 %	
REPORTED SALES DOLLARS	13,139,172	10,923,071	20 %	154,824,804	112,602,828	37 %
AVG SELL PRICE/UNIT	298,617	227,563	31 %	258,041	205,105	25 %
MEDIAN SELL PRICE	296,500			239,900		
PRICE RATIO	98 %	98 %		98 %	98 %	
DAYS TO SELL	66	34	94 %	53	38	39 %
ACTIVE LISTINGS	265	178	48 %			
CONDOMINIUM (APT)						
UNITS LISTED	7	5	40 %	174	179	2-%
UNITS REPORTED SOLD	7	14	50-%	130	149	12-%
SELL/LIST RATIO	100 %	280 %		74 %	83 %	
REPORTED SALES DOLLARS	1,311,400	2,047,400	35-%	17,773,852	20,605,183	13-%
AVG SELL PRICE/UNIT	187,342	146,242	28 %	136,721	138,289	1-%
MEDIAN SELL PRICE	139,900			128,800		
PRICE RATIO	98 %	99 %		98 %	99 %	
DAYS TO SELL	138	79	74 %	91	72	26 %
ACTIVE LISTINGS	71	66	7 %			
CONDOMINIUM (TWNHSE)						
UNITS LISTED	4	1	300 %	58	70	17-%
UNITS REPORTED SOLD	3	4	25-%	46	54	14-%
SELL/LIST RATIO	75 %	400 %		79 %	77 %	
REPORTED SALES DOLLARS	512,000	608,000	15-%	6,089,149	5,519,210	10 %
AVG SELL PRICE/UNIT	170,666	152,000	12 %	132,372	102,207	29 %
MEDIAN SELL PRICE	182,000			127,400		
PRICE RATIO	99 %	99 %		98 %	98 %	
DAYS TO SELL	40	43	6-%	63	52	21 %
ACTIVE LISTINGS	10	9	11 %			

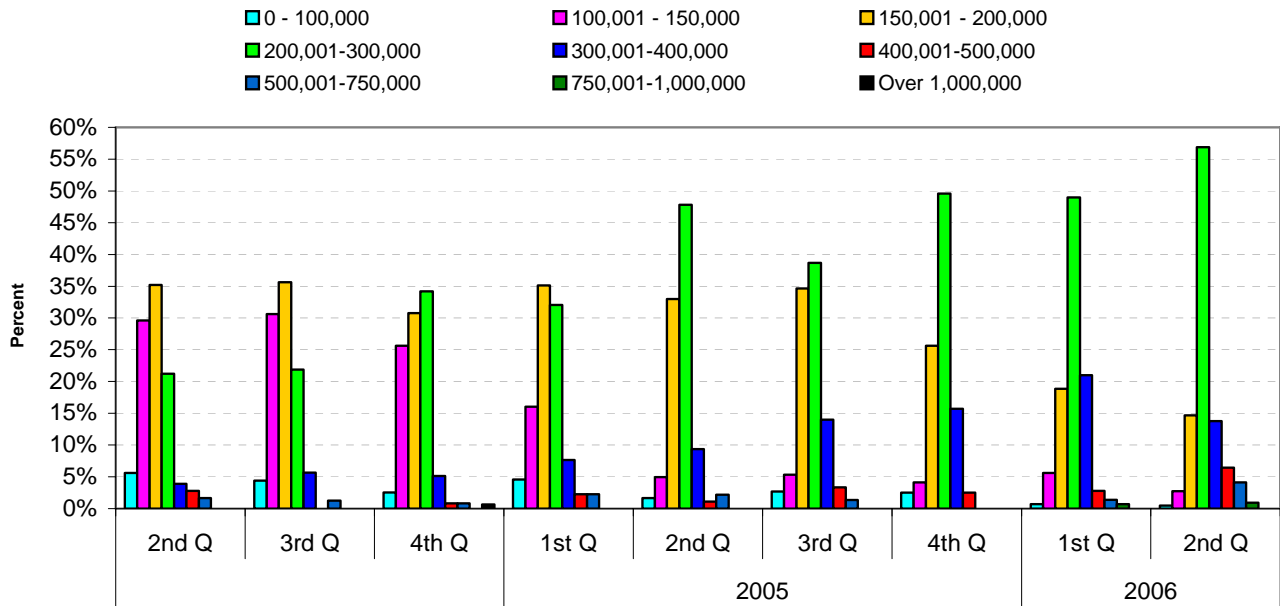
PLEASE NOTE:

SINGLE FAMILY property does NOT INCLUDE acreage with house, condominiums, duplex/triplex, mobile homes, single family waterfront or single family strata.

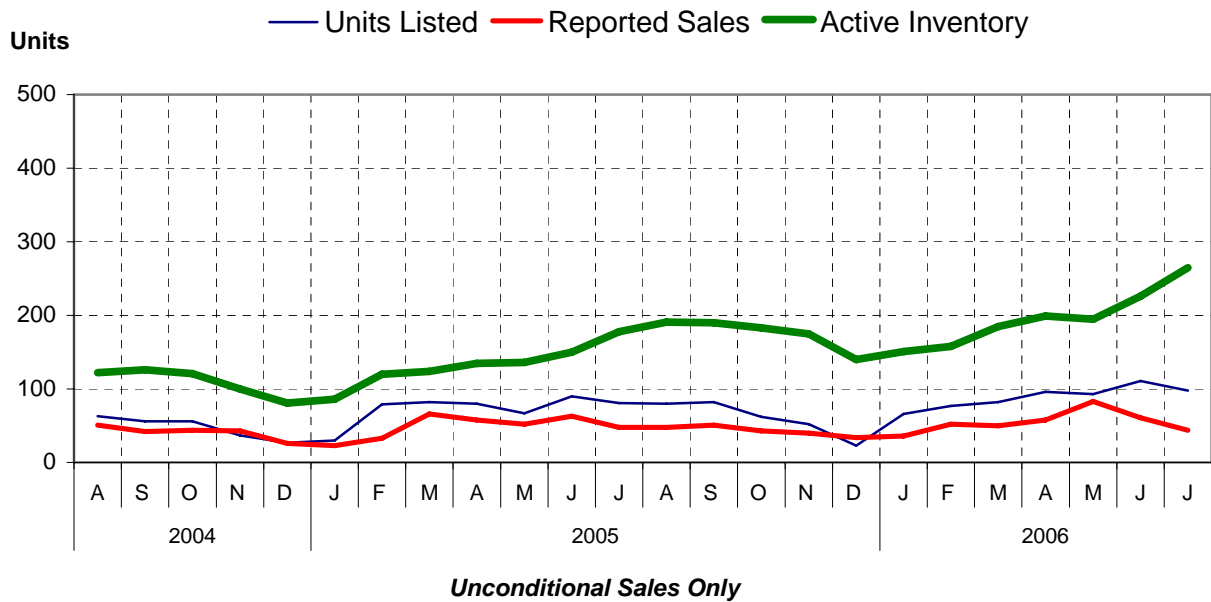
LOTS do NOT INCLUDE acreage or waterfront acreage.

COLLAPSE RATE – The collapse rate for all properties within the Board area was 1.6% for the current month.

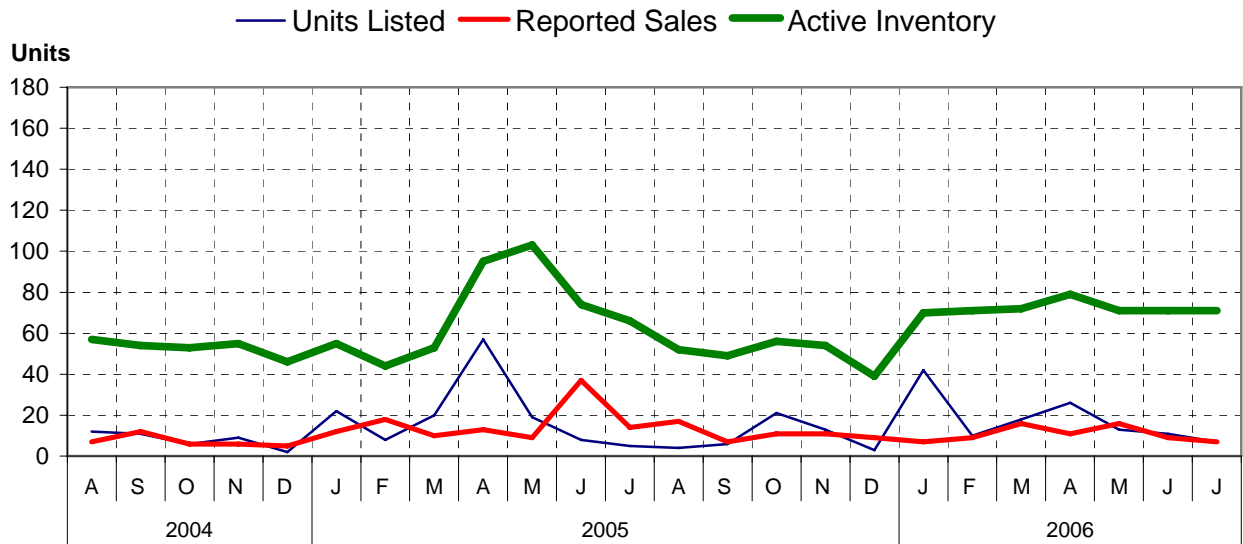
Percentage of Market Share by Price Range Campbell River



Single Family Comparisons between

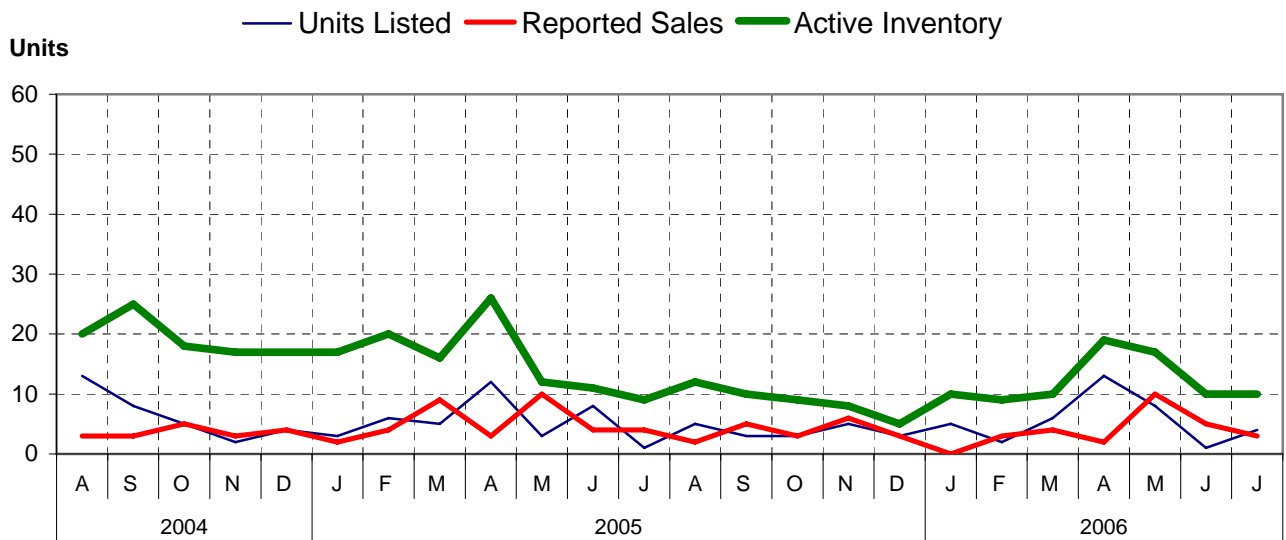


Condominium (Apartment) Comparisons between



Unconditional Sales Only

Condominium (Townhouse) Comparisons between



Unconditional Sales Only

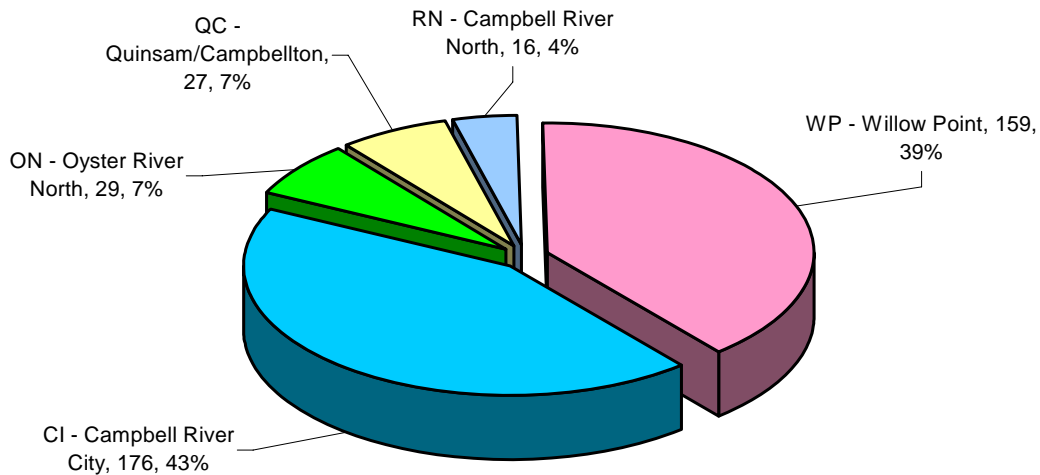
MLS® Single Family Sales Analysis

Unconditional Sales from January 1 to July 31, 2006

-----SUB-AREAS-----

RANGE	TOTAL	CI	ON	QC	RN	WP
0 - 100,000	2	1		1		
100,001- 150,000	14	6	1	7		
150,001- 200,000	63	30	3	6	5	19
200,001- 300,000	214	103	17	10	4	80
300,001- 400,000	74	24	5	2		43
400,001- 500,000	23	4	1		3	15
500,001- 750,000	13	7	2		2	2
750,001-1,000,000	3	1		1	1	
OVER 1,000,000	1				1	
ZONE 1 TOTALS	407	176	29	27	16	159

Single Family Sales-Campbell River by Subarea



Total Unconditional Sales January 1 to July 31, 2006 = 407