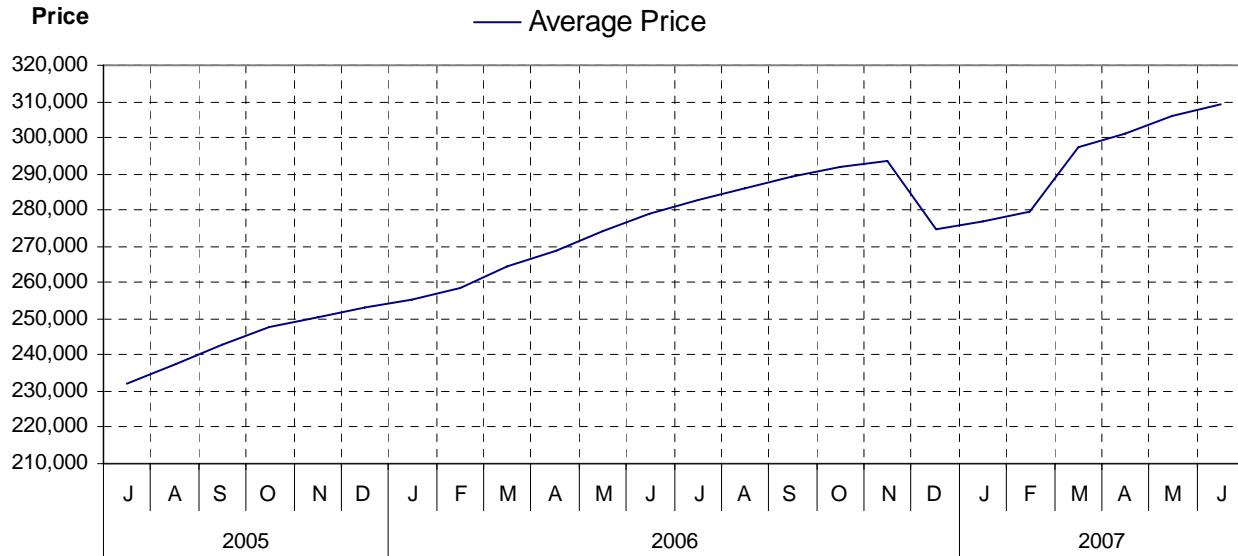


Board Area

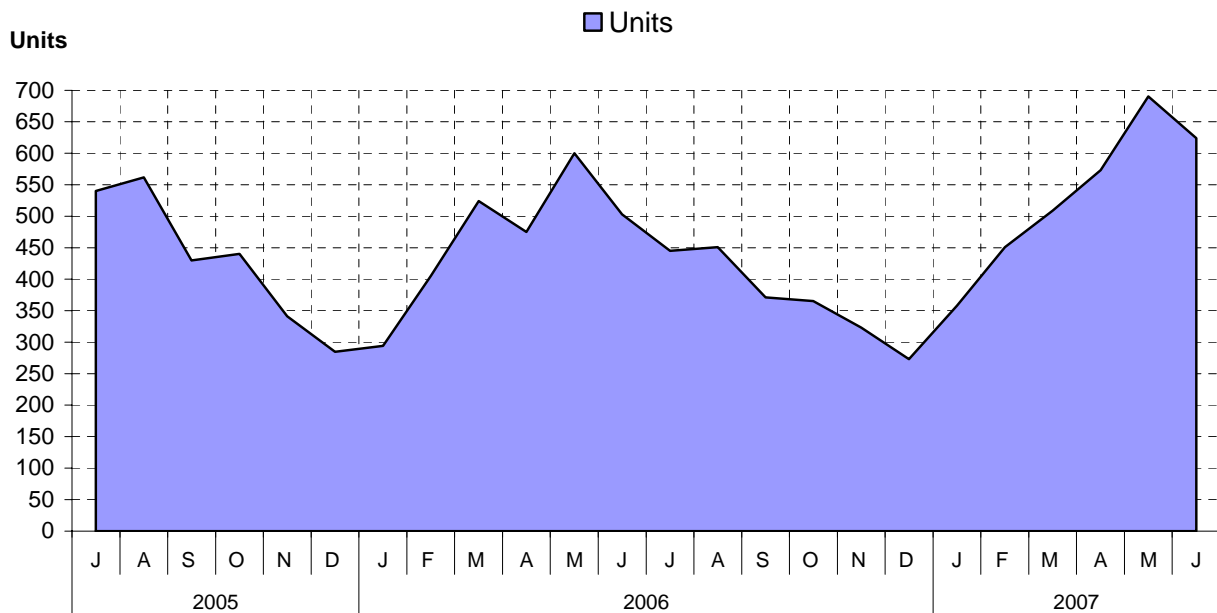
as at June 30, 2007

Cumulative Residential Average Single Family Sale Price



NOTE: Figures are based on a "rolling total" from the past 12 months – i.e. 12 months to date instead of the calendar "year to date".

Single Family Units Reported Sold



Comparative Activity by Property Type

(Reported Sales – Unconditional Sales Only)

	-----CURRENT MONTH-----			-----12 MONTHS TO DATE-----		
	THIS YEAR	LAST YEAR	% Change	THIS YEAR	LAST YEAR	% Change
LOTS						
UNITS LISTED	118	181	34-%	2,042	1,621	25 %
UNITS REPORTED SOLD	116	94	23 %	903	939	3-%
SELL/LIST RATIO	98 %	51 %		44 %	57 %	
REPORTED SALES DOLLARS	16,747,000	11,316,445	47 %	124,244,592	113,684,362	9 %
AVG SELL PRICE/UNIT	144,370	120,387	19 %	137,590	121,069	13 %
PRICE RATIO	98 %	97 %		97 %	98 %	
DAYS TO SELL	95	53	79 %	85	74	14 %
ACTIVE LISTINGS	895	588	52 %			

SINGLE FAMILY

UNITS LISTED	977	907	7 %	8,901	8,123	9 %
UNITS REPORTED SOLD	624	520	20 %	5,436	5,806	6-%
SELL/LIST RATIO	63 %	57 %		61 %	71 %	
REPORTED SALES DOLLARS	206,255,366	158,431,422	30 %	1,679,939,290	1,549,113,489	8 %
AVG SELL PRICE/UNIT	330,537	304,675	8 %	309,039	266,812	15 %
PRICE RATIO	98 %	98 %		98 %	98 %	
DAYS TO SELL	50	43	16 %	57	49	16 %
ACTIVE LISTINGS	2,210	2,029	8 %			

CONDOMINIUM (APT)

UNITS LISTED	218	187	16 %	1,770	1,482	19 %
UNITS REPORTED SOLD	87	104	16-%	989	1,096	9-%
SELL/LIST RATIO	39 %	55 %		55 %	73 %	
REPORTED SALES DOLLARS	17,418,950	27,139,918	35-%	199,702,665	177,183,328	12 %
AVG SELL PRICE/UNIT	200,217	260,960	23-%	201,923	161,663	24 %
PRICE RATIO	97 %	99 %		98 %	98 %	
DAYS TO SELL	69	46	50 %	73	56	30 %
ACTIVE LISTINGS	616	484	27 %			

CONDOMINIUM (TWNHSE)

UNITS LISTED	131	124	5 %	1,157	938	23 %
UNITS REPORTED SOLD	92	63	46 %	720	614	17 %
SELL/LIST RATIO	70 %	50 %		62 %	65 %	
REPORTED SALES DOLLARS	21,036,450	13,480,270	56 %	163,873,647	114,373,114	43 %
AVG SELL PRICE/UNIT	228,657	213,972	6 %	227,602	186,275	22 %
PRICE RATIO	98 %	98 %		98 %	98 %	
DAYS TO SELL	59	46	28 %	59	48	22 %
ACTIVE LISTINGS	321	269	19 %			

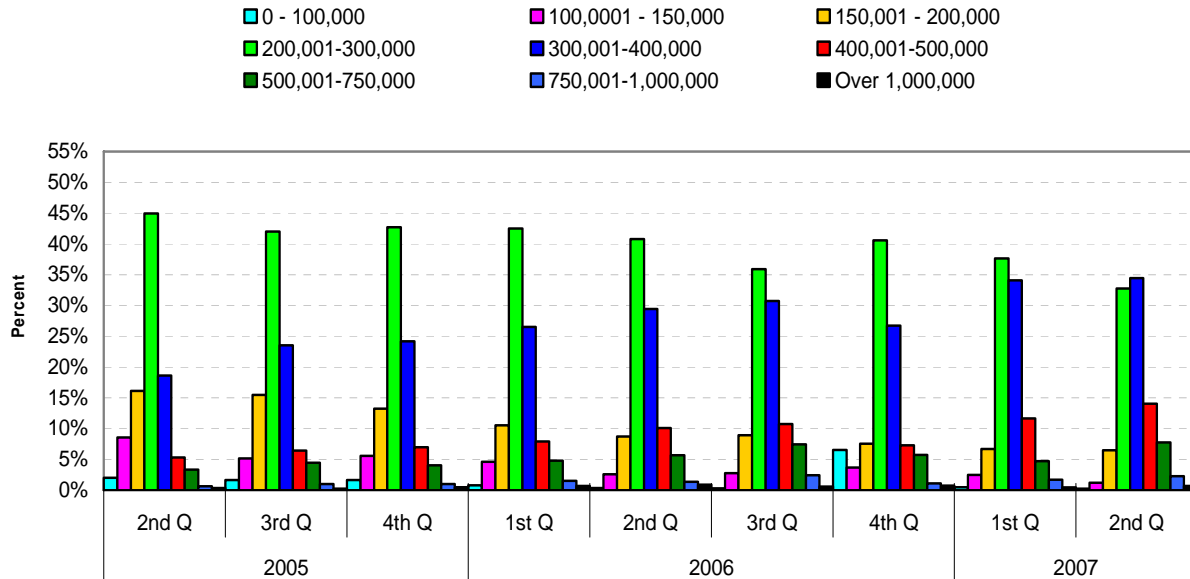
PLEASE NOTE:

SINGLE FAMILY property does NOT INCLUDE acreage with house, condominiums, duplex/triplex, mobile homes/on pad, single family waterfront or single family strata.

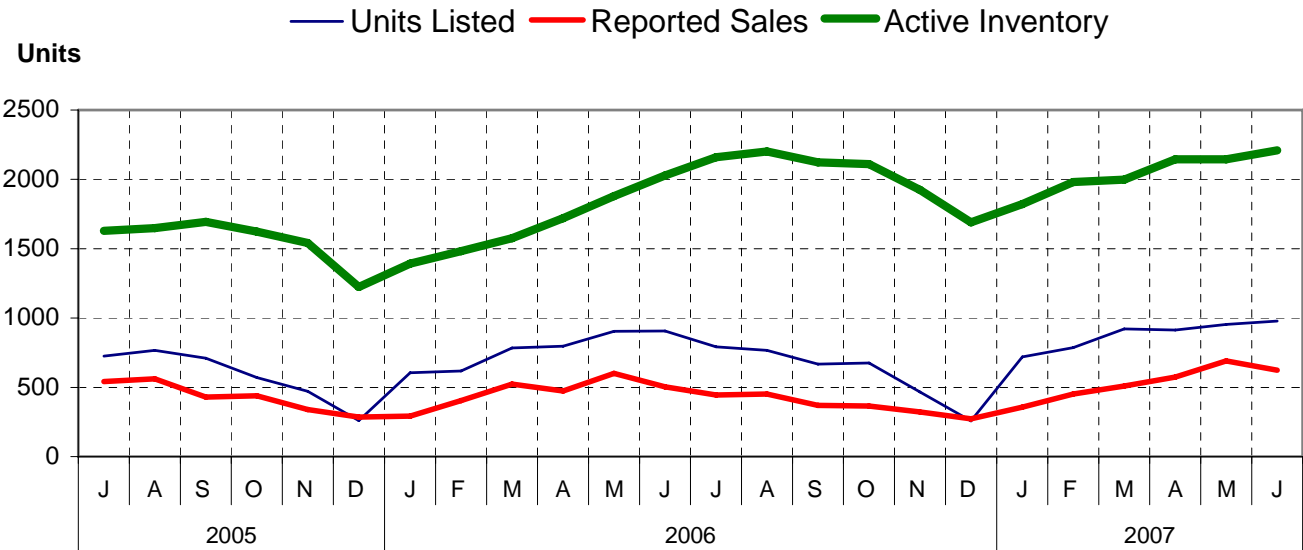
LOTS do NOT INCLUDE acreage or waterfront acreage.

COLLAPSE RATE – The collapse rate for all properties within the Board area was 0.9% for the current month.

Percentage of Market Share by Price Range Board Area

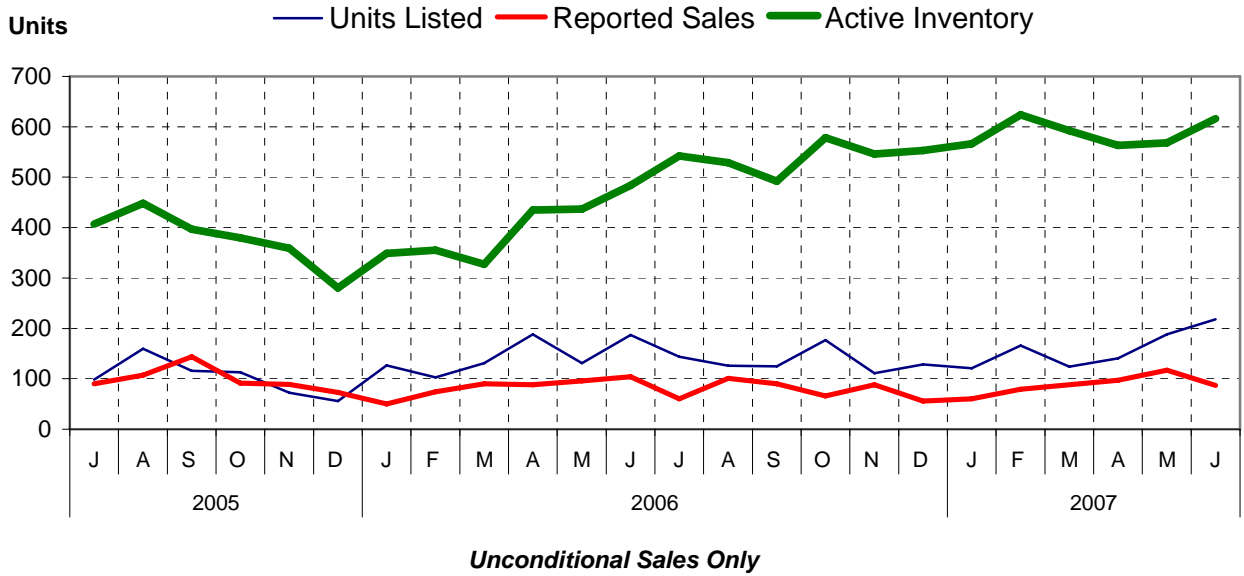


Single Family Comparisons between

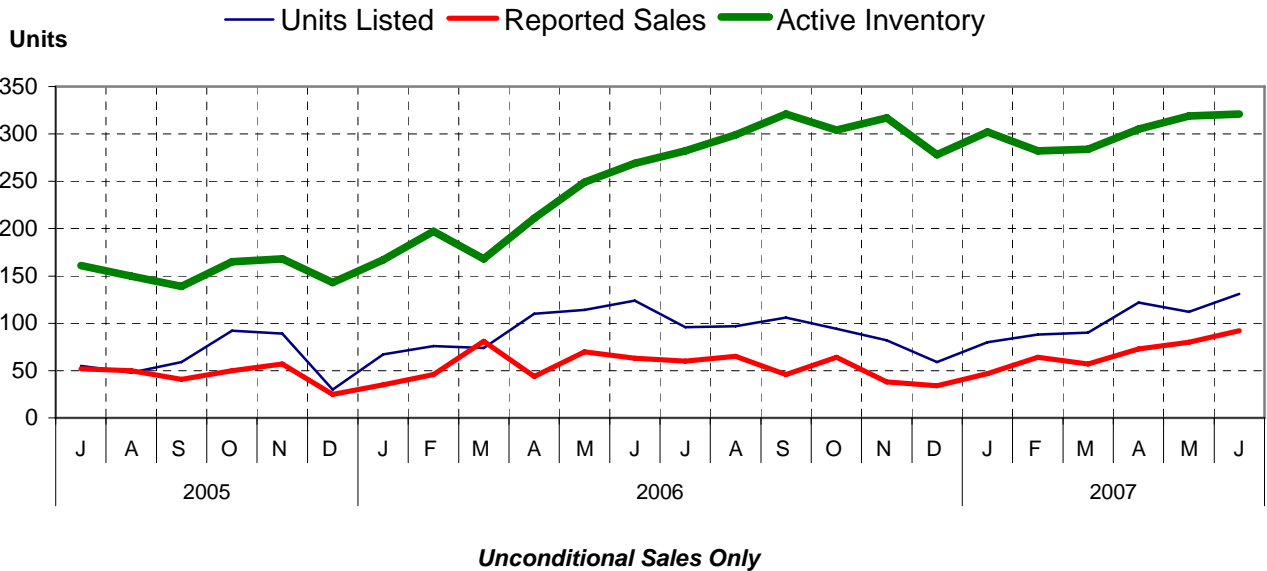


Unconditional Sales Only

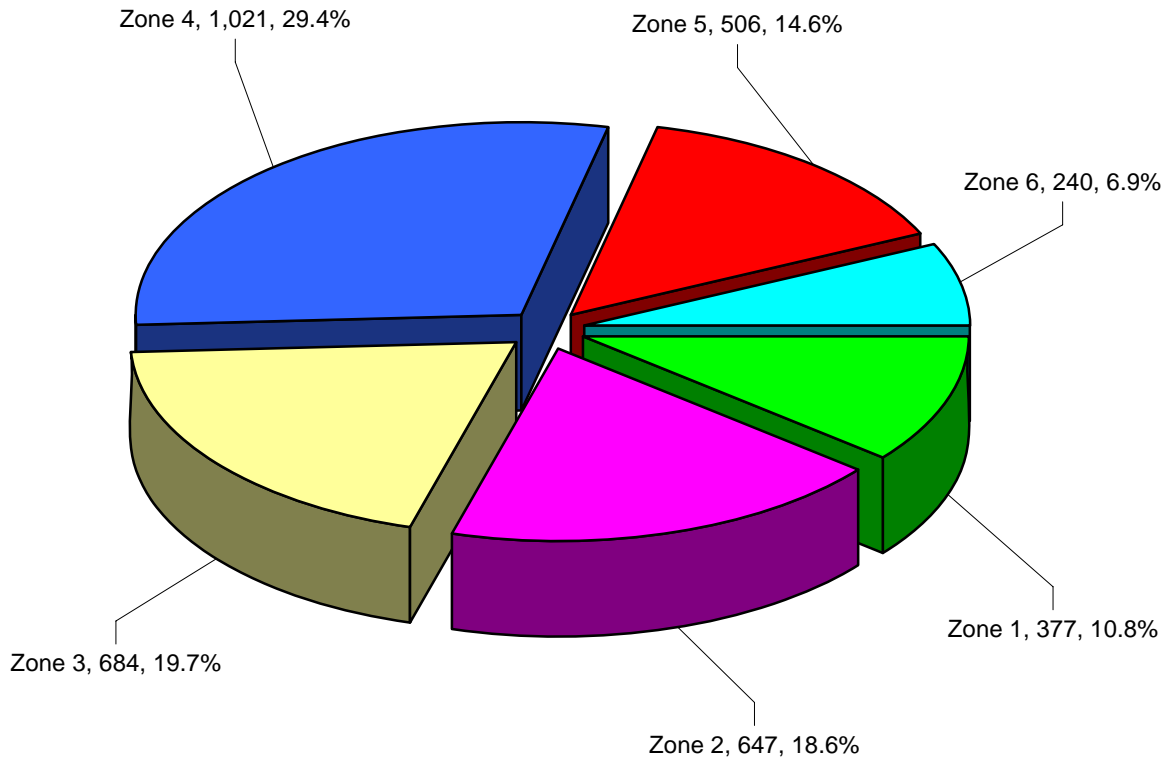
Condominium (Apartment) Comparisons between



Condominium (Townhouse) Comparisons between



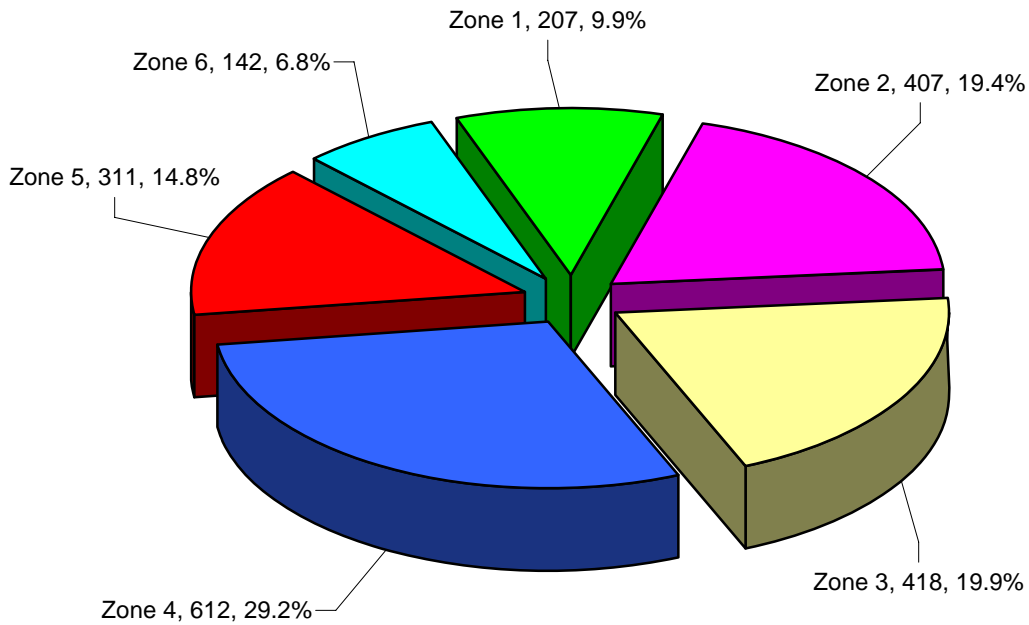
MLS® Single Family Sales Analysis For Board Area – by Zone



Total Unconditional Sales January 1 to June 30, 2007 = 3,475

Zone 1 – Campbell River
Zone 2 – Comox Valley
Zone 3 – Cowichan Valley
Zone 4 – Nanaimo
Zone 5 – Parksville/Qualicum
Zone 6 – Port Alberni/West Coast

2nd Quarter 2007
MLS® Single Family Sales Analysis
For Board Area – By Zone



Total Unconditional Sales - 2,097
2nd Quarter - April 1 to June 30, 2007

- Zone 1 – Campbell River**
- Zone 2 – Comox Valley**
- Zone 3 – Cowichan Valley**
- Zone 4 – Nanaimo**
- Zone 5 – Parksville/Qualicum**
- Zone 6 – Port Alberni/West Coast**